

Music is written on 5 lines and 4 spaces called the **staff**:



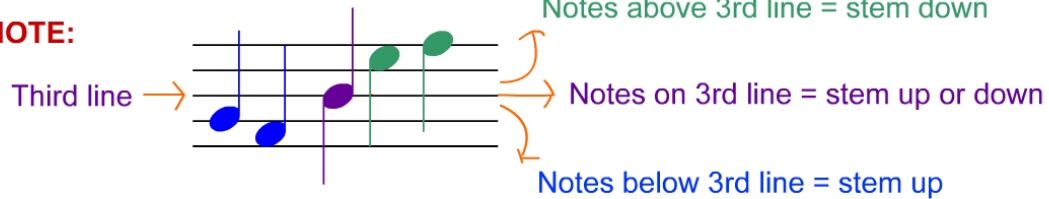
Notes can be written on the **lines**




or in the **spaces**




**NOTE:**

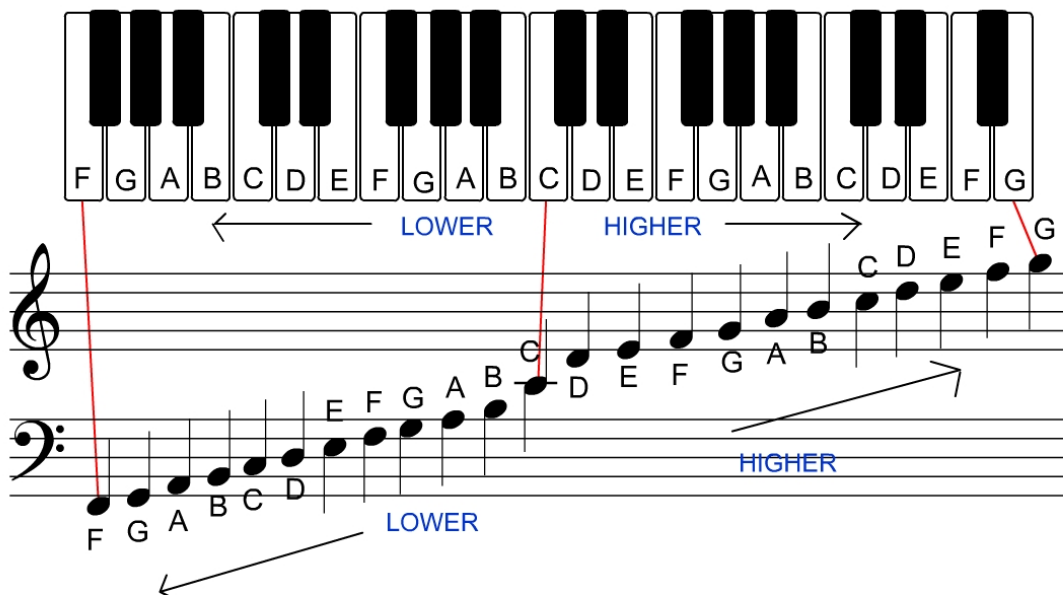


To give notes a particular pitch we place a **CLEF** at the beginning of each staff.

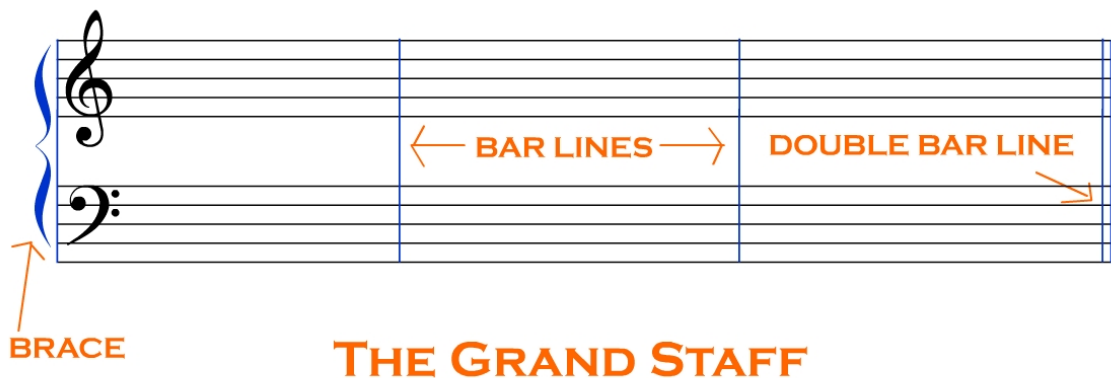
The **TREBLE CLEF**  is used for the notes on the **HIGH** side of the piano.

The **BASS CLEF**  is used for the notes on the **LOW** side of the piano.

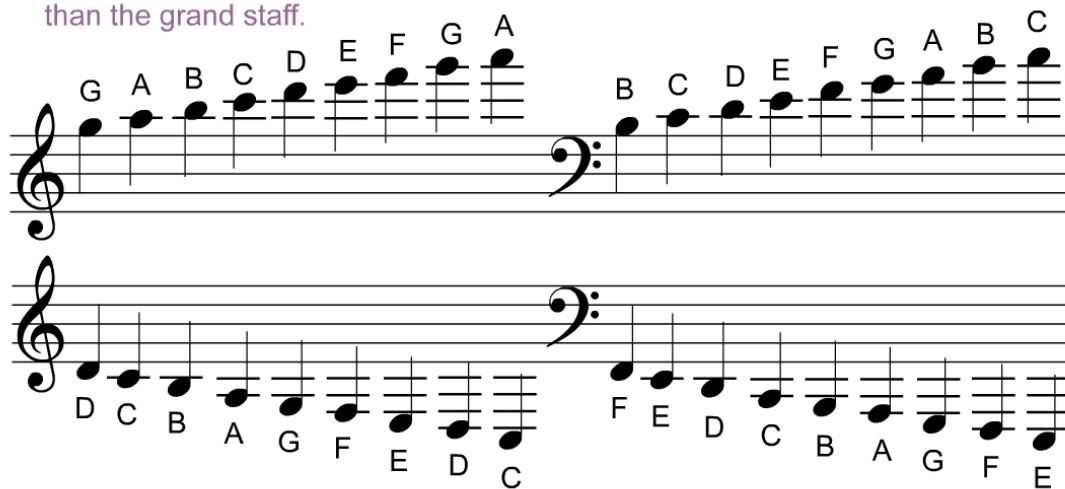
Every note on the staff refers to a specific pitch or key on the piano.  
As we move to the right on the piano, the notes get higher on the staff and  
as we move to the left on the piano, the notes get lower on the staff:



The **TREBLE STAFF** and the **BASS STAFF** are combined together with a **BRACE** and a **BAR LINE** to make the **GRAND STAFF**:



**LEDGER LINES** are small lines used to write notes that are higher or lower than the grand staff.



Ledger line notes are a little tricky to figure out so just take your time and start from a note you know and work your way up or down through the alphabet on every line and space.